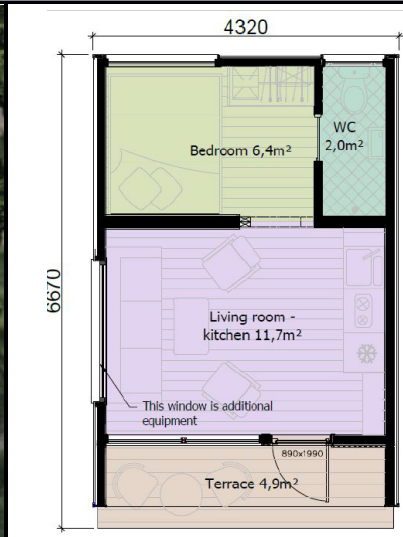
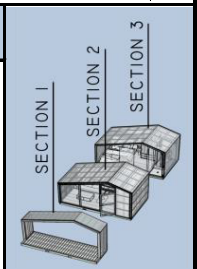


Modular House M28 | Offer



FOOTPRINT = 28m², INTERNAL AREA = 20 m², TERRACE = 5m²

- ✓ DIMENSIONS DESIGNED TO FIT ON A PLATFORM
- ✓ 1 HOUSE PER ONE PLATFORM
- ✓ HALF OF THE DAY ASSEMBLY REQUIRED (2 PEOPLE)



MINIMAL COMPLETION ITEMS - INCLUDED IN BASE KIT

Timber Frame Box with finished external & internal layers	✓
Electrical installation	✓
Plumbing installation & ventilation slots	✓
Windows & doors, Triple Glazed, PVC Frame	✓
Terrace	✓

OPTIONAL ITEMS THAT CAN BE ADDED TO THE BASE KIT FOR EXTRA PRICE

Additional window in living room (only if external wall finish is wooden panels)	
Kitchen cupboards, with top, a fridge and sink with tap, 2-zone hob, hood	
WC&Shower equipment, washbasin with cupboard	
AC with heating function in main area	
Heated floor in main area	
Heated floor in WC	
Boiler	
Internal and external lighting units, sockets & switches	
Closet (to hide the boiler & clothes space)	

REQUEST A PRICE

Items that are not included and should be taken care of by the client:

- Foundation, ground work, electricity and water supply in the lot;
- Unloading from the trailer (Forklift or Crane);
- Furniture: bed, couch, table, etc.;
- Transport (not included in the base price, but we can book it on your behalf);

