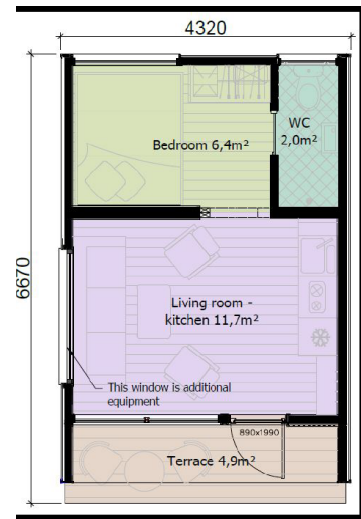
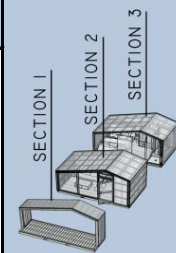


Modular House M-28 | Offer | valid until 1st July, 2022



FOOTPRINT = 28m², INTERNAL AREA = 20 m², TERRACE = 5m²

- ✓ **DIMENSIONS DESIGNED TO FIT ON A PLATFORM**
- ✓ **1 HOUSE PER ONE PLATFORM**
- ✓ **HALF OF THE DAY ASSEMBLY REQUIRED (2 PEOPLE)**



MINIMAL COMPLETION ITEMS - BASE KIT	BASE PRICE: 29 900,00
Timber Frame with finished external & internal layers (Walls, roof, Floor)	✓
Electrical instalation	✓
Plumbing instalation & ventilation slots	✓
Windows & doors, Triple Glazed, PVC Frame	✓
Terrace	✓
OPTIONAL ITEMS THAT CAN BE ADDED TO THE BASE KIT FOR EXTRA PRICE	
Additional window in living room (only if ext.wall finish is wooden panels)	
Kitchen cupboards, with top, a fridge and sink with tap, 2zone hob, hood	
WC&Shower equip., washbasin with cupboard	
AC with heating function in main area	
Heated floor in main area	
Heated floor in WC	
Boiler	
Internal and external lighting units, sockets & switches	
Closet (to hide the boiler & clothes space)	
TOTAL PRICE: DEPENDS ON THE OPTIONAL EXTRAS ADDED TO THE BASE KIT	

Prices do not include import duties or VAT

Items that are not included and should be taken care of by the client:

- Foundation, ground work, electricity and water supply in the lot;
- Unloading from the trailer (Forklift or Crane);
- Furniture: bed, couch, table, etc.;
- Transport (not included in the base price, but we can book it on your behalf);